

OKLAHOMA DEPARTMENT OF WILDLIFE CONSERVATION

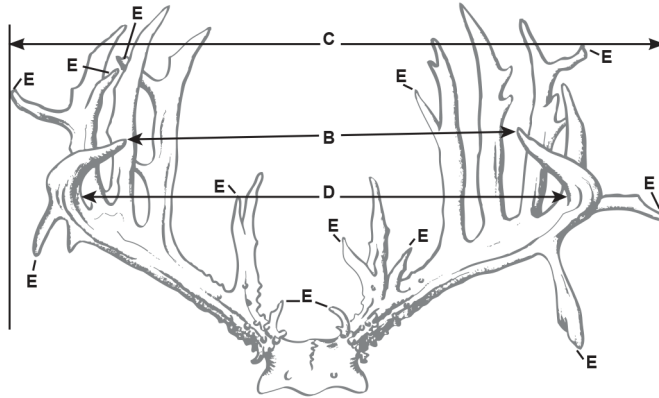
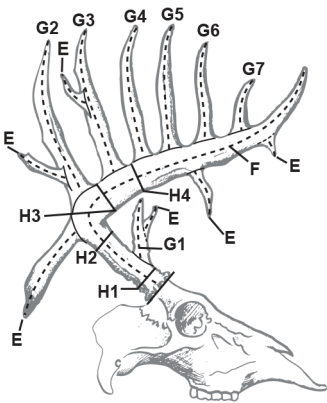
CY CURTIS AWARD PROGRAM

NON-TYPICAL WHITETAILED DEER

MINIMUM SCORE- 150



Detail of Point Measurement



Abnormal Points	
Right Antler	Left Antler

Subtotals:		
Enter Total at E.		
Column 1	Column 2	Column 3
Right Antler	Left Antler	Difference

A. Number of Points on Each Antler		R.	L.	Spread Credit	Column 1	Column 2	Column 3
B. Tip to Tip Spread		C. Greatest Spread					
D. Inside Spread of Main Beams		Credit may equal but not exceed longer main beam					
E. Total Length of Abnormal Points							
F. Length of Main Beam							
G-1. Length of First Point, if Present							
G-2. Length of Second Point							
G-3. Length of Third Point							
G-4. Length of Fourth Point							
G-5. Length of Fifth Point							
G-6. Length of Sixth Point, if Present							
G-7. Length of Seventh Point, if Present							
H-1. Smallest Circumference Between Burr and 1st Point							
H-2. Smallest Circumference Between 1st and 2nd Points							
H-3. Smallest Circumference Between 2nd and 3rd Points							
H-4. Smallest Circumference Between 3rd and 4th Points							
TOTALS							
Add Together:	Spread Credit	County of Kill:		Nearest Town:			
	Column 1	Date Killed:		By Whom Killed:			
	Column 2	Mailing Address:		Phone:			
	Subtotal						
Subtract:	Column 3	Present Owner (if different than above)					
	Subtotal						
	Add Total from E.	Type of Weapon:					
	Final Score	Remarks:					