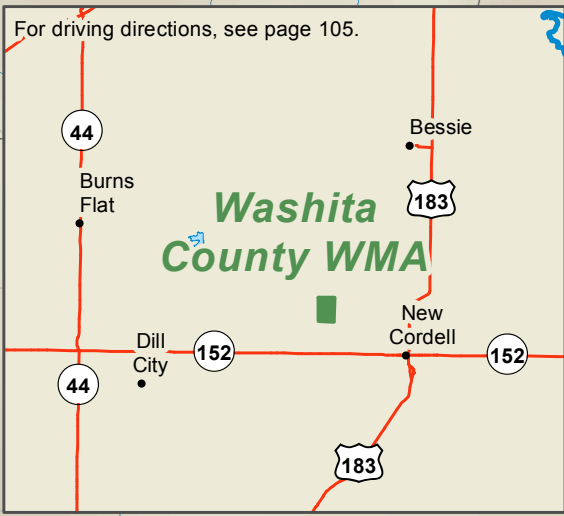
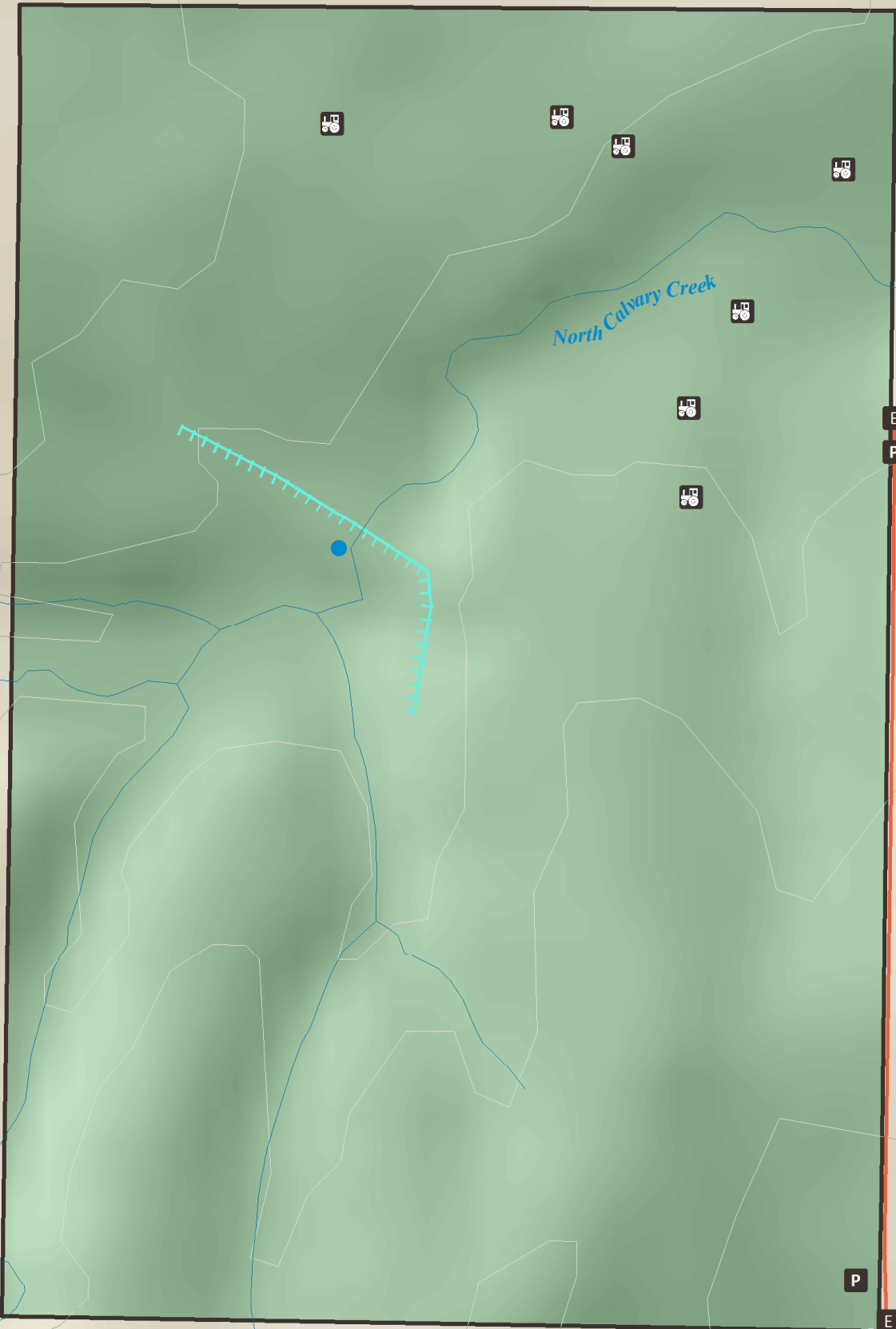


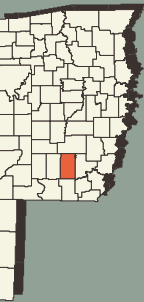
For driving directions, see page 105.



This entire area is designated as a Non-Ambulatory Hunting Area



Washita County Wildlife Management Area



Area: 240 acres  
 (580) 595-0347  
[wildlifedepartment.com/wildlife-management-areas/washita-county](http://wildlifedepartment.com/wildlife-management-areas/washita-county)

