

## **2020-Season Bowhunter Observation Survey**

### **Objective:**

1. To provide statewide and regional population indices of furbearers (beaver, bobcat, coyote, otter, red and gray fox, raccoon, and other species as needed), and deer.
2. To develop a long-term database of selected furbearer and deer data for monitoring and evaluating an index of species observation.
3. To provide an independent supplement to other deer data collected by the ODWC.

### **Abstract:**

The Oklahoma Department of Wildlife Conservation (ODWC) completed its fifth annual bowhunter observation survey. The project has 2,158 individuals signed-up to participate. Only 240 hunters submitted a survey form, continuing the significant drop in participation over the first year. This resulted in a 11% participation rate in the project. Participating hunters submitted a total of 1,830 survey forms, accounting for 7,062 hours of wildlife observation. Hunters averaged 3.85 hours of wildlife observation per survey submission. Observation survey forms submitted by hunters included observations from 71 of Oklahoma's 77 counties. Hunters reported the date and time of day they recorded observations; the number of hours afield; the type and number of species observed; and weather conditions and mast crop abundance. White-tailed deer were observed 804 times per 1,000 hours. Furbearers were observed 93 times per 1,000 hours.

### **Procedures:**

The Oklahoma Wildlife Department implemented a bowhunter observation survey to calculate population indices for furbearer species and deer at the state and regional levels. Bowhunters spend a large amount of time in stands within the natural environment of many wildlife species while hunting deer. Bowhunters were invited to participate in the project.

#### **Participant Invitation**

Invitations to participate in the survey were promoted through ODWC's general e-mail list and social media to identify individuals that *desired* to participate (i.e. voluntary self-selection). A sign-up link was included in promotional releases, requiring self-selected participants to provide their contact information and archery participation information

#### **Participant Instruction**

Participating bowhunters received an e-mailed participant packet approximately one month prior to archery season. Instructions on how to participate, a link to an electronic survey form and a printable copy of the survey form were included in the participant packet.

Additional e-mails were sent to participants prior to the opening of archery season (September 30, 2020), and about one month into the survey period (November 5, 2020) to remind participants submit survey forms. Additional instructions were provided as necessary to clarify questions that arose during the season.

### Data collection and submission

Participants were asked to record their observations while they were in the field during the first two months of Deer Archery Season. The survey period began on the first day of Deer Archery Season (Oct. 1) and concluded November 31, 2020. However, due to declining participation, we allowed participants to submit observation data outside of this period. Participants were able to record observations in any way they preferred—by using the printable survey form, a paper notepad, or an application on their cell phone (e.g. Notes). Regardless of the method chosen, participants were asked to keep in-field records to help minimize recall bias.

Participants were given two options for submitting surveys:

- 1) Participants were encouraged to submit surveys via an electronic survey form, which could be accessed from a desktop computer or a mobile device. Participants were able to submit survey data electronically as often as they wish—daily, or once per season.
- 2) Participants could also record observations and submit surveys using a paper survey form. Paper forms could be mailed back to ODWC or scanned and e-mailed.

### Data analysis and report

Observations were standardized for each of the species to reflect the number of observations per 1,000 hours hunted in each of the 77 counties and statewide. Population indices were calculated by zoogeographic regions for furbearers (see Figure 4). Year-to-year comparisons are made where appropriate. Data are subsequently described in tables.

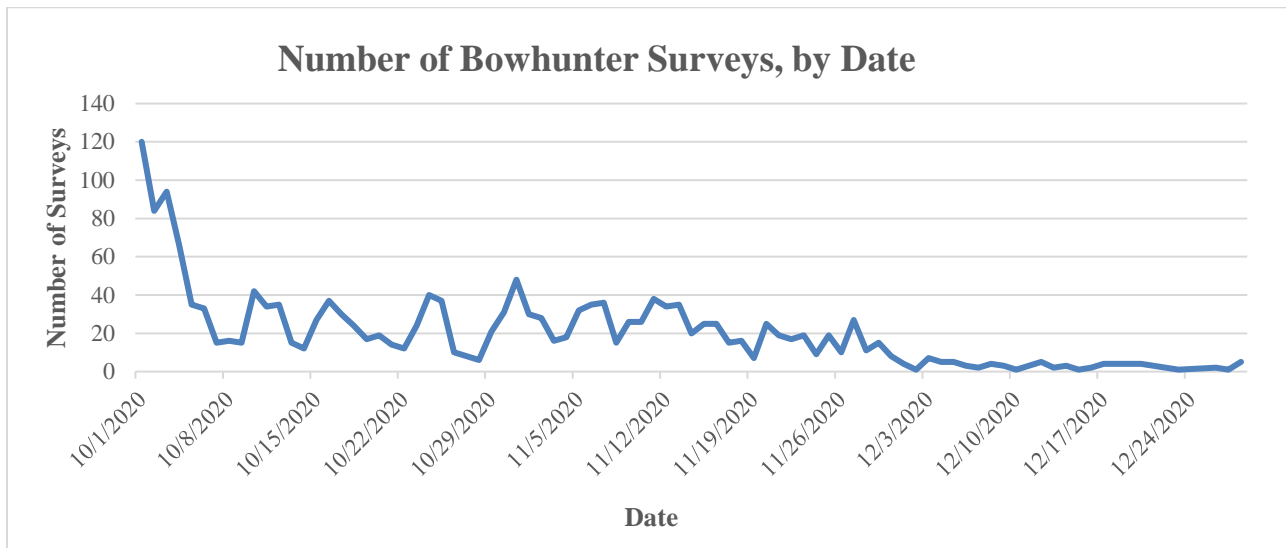
**When reviewing the information in the tables that follow, please note that there are many factors that could affect the observability of wildlife, such as population size, habitat, topography, and land use. In some cases, wildlife observations are based off a limited number of observation hours, and/or from a limited number of hunters.**

## Hunter Participation

Despite having 2,158 hunters in the participant pool, only 240 submitted a bowhunter observation survey form during the 2020 archery season, resulting in a 11% participation rate for the project. Although participation is low, and generally declining, the number of submissions and observation hours increased over 2019. This might suggest that the hunters who participate are dedicated to the project. Participating hunters submitted a total of 1,830 survey forms (compared to 1,453 in 2019), accounting for 7,062 hours of wildlife observation (compared to 5,667 hours in 2019). Hunters averaged 3.85 hours of wildlife observation per survey submission (Table 1). Bowhunter observation surveys were conducted throughout the two-month survey period, with the number of surveys tapering off from the beginning to the end of the season. Peaks in completion of observation surveys can be seen on weekends (Figure 1).

**Table 1.** Summary statistics for statewide hunter participation in the 2020-season Bowhunter Observation Survey.

<i>Hunters Signed-up</i>	2,158
<i>Hunters Submitting Observations</i>	240 (11% participation rate)
<i>Total Surveys Submitted</i>	1,830
<i>Average Surveys Submitted per Hunter</i>	7.6
<i>Average Observation Hours per submission</i>	3.85
<i>Total Hours of Observation</i>	7,062



**Figure 1.** The number of bowhunter observations surveys conducted during the 2020-season, by date.

**Table 2.** Descriptive statistics for hunter participation in the 2020-season Bowhunter Observation Survey, by county.

<b>County</b>	<b>Total Hours</b>	<b>Average Hours/Submission</b>	<b>Total Submissions</b>
<i>Adair</i>	99	6.60	15
<i>Alfalfa</i>	72	10.29	7
<i>Atoka</i>	126	2.93	43
<i>Beaver</i>	36	2.57	14
<i>Beckham</i>	110	5.00	22
<i>Blaine</i>	361	4.88	74
<i>Bryan</i>	90	3.10	29
<i>Caddo</i>	34	3.09	11
<i>Canadian</i>	59	2.95	20
<i>Carter</i>	266	5.32	50
<i>Cherokee</i>	20	6.67	3
<i>Cimarron</i>	460	3.48	132
<i>Cleveland</i>	61	4.36	14
<i>Coal</i>	8	4.00	2
<i>Comanche</i>	68	4.25	16
<i>Craig</i>	283	4.35	65
<i>Creek</i>	140	3.59	39
<i>Custer</i>	70	4.38	16
<i>Delaware</i>	48	2.67	18
<i>Dewey</i>	53	8.83	6
<i>Garfield</i>	97	3.03	32
<i>Garvin</i>	86	2.97	29
<i>Grady</i>	10	2.50	4
<i>Grant</i>	220	3.14	70
<i>Greer</i>	32	4.57	7
<i>Harmon</i>	162	4.91	33
<i>Haskell</i>	106	3.21	33
<i>Hughes</i>	7	7.00	1
<i>Jackson</i>	8	4.00	2
<i>Jefferson</i>	160	3.81	42
<i>Johnston</i>	15	3.00	5
<i>Kay</i>	23	3.83	6
<i>Kingfisher</i>	6	2.00	3
<i>Kiowa</i>	23	4.60	5
<i>Latimer</i>	130	3.25	40
<i>LeFlore</i>	169	3.93	43
<i>Lincoln</i>	172	4.00	43
<i>Logan</i>	54	4.50	12
<i>Love</i>	29	3.63	8
<i>Marshall</i>	6	3.00	2
<i>Mayes</i>	154	3.76	41
<i>McClain</i>	18	3.00	6
<i>McCurtain</i>	257	5.59	46
<i>McIntosh</i>	6	2.00	3
<i>Murray</i>	7	7.00	1
<i>Muskogee</i>	31	2.38	13
<i>Noble</i>	26	3.25	8

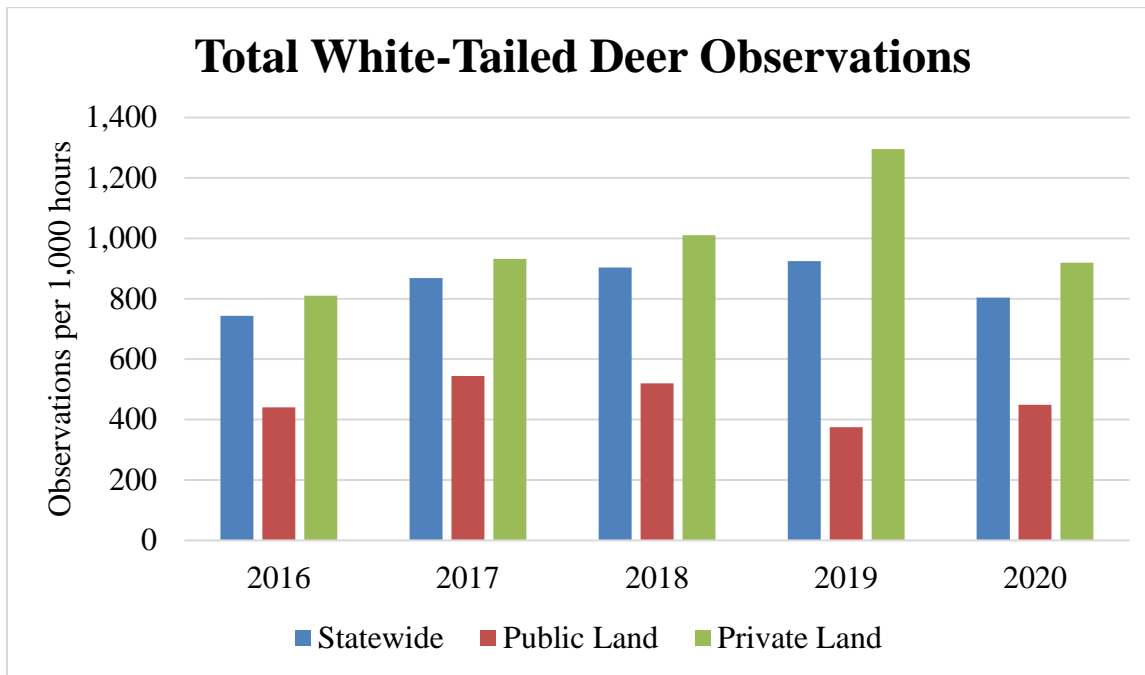
**Table 2** Continued.

<b>County</b>	<b>Total Hours</b>	<b>Average Hours/Submission</b>	<b>Total Submissions</b>
<i>Nowata</i>	138	2.94	47
<i>Okfuskee</i>	88	4.19	21
<i>Oklahoma</i>	46	3.29	14
<i>Okmulgee</i>	125	5.21	24
<i>Osage</i>	276	3.73	74
<i>Ottawa</i>	100	5.26	19
<i>Pawnee</i>	261	2.61	100
<i>Payne</i>	183	4.16	44
<i>Pittsburg</i>	202	4.59	44
<i>Pontotoc</i>	152	3.53	43
<i>Pottawatomie</i>	129	3.58	36
<i>Pushmataha</i>	48	6.86	7
<i>Roger Mills</i>	46	3.83	12
<i>Rogers</i>	117	4.33	27
<i>Seminole</i>	40	3.33	12
<i>Sequoyah</i>	33	4.13	8
<i>Stephens</i>	131	2.91	45
<i>Texas</i>	9	4.50	2
<i>Tulsa</i>	58	3.41	17
<i>Wagoner</i>	81	3.68	22
<i>Washington</i>	77	3.85	20
<i>Washita</i>	10	3.33	3
<i>Woods</i>	173	4.22	41
<i>Woodward</i>	28	4.67	6

## White-tailed Deer

**Table 3.** Standardized white-tailed deer observations from the 2020-season Bowhunter Observation Survey, statewide and by land type.

	Statewide	Public Land	Private Land
	Observations per 1,000 Hours		
<i>Total deer</i>	804	449	919
<i>Bucks</i>	217	98	256
<i>Does</i>	365	226	410
<i>Fawns</i>	160	62	192
<i>Unknown</i>	61	62	61



**Figure 2.** Comparison of standardized white-tailed deer observations from the 2016 - 2020 seasons Bowhunter Observation Survey, statewide and by land type.

**Table 4.** Standardized white-tailed deer observations from the 2020-season Bowhunter Observation Survey, by county.

<b>County</b>	<b>Bucks</b>	<b>Does</b>	<b>Fawns</b>	<b>Unknown</b>	<b>Total Deer</b>
	<b>Observations per 1,000 hours</b>				
<i>Adair</i>	253	263	101	10	626
<i>Alfalfa</i>	319	250	361	0	931
<i>Atoka</i>	222	762	206	0	1190
<i>Beaver</i>	0	0	0	0	0
<i>Beckham</i>	611	778	528	28	1944
<i>Blaine</i>	82	364	64	36	545
<i>Bryan</i>	284	353	124	83	843
<i>Caddo</i>	400	1111	433	33	1978
<i>Canadian</i>	118	29	29	0	176
<i>Carter</i>	247	301	247	123	918
<i>Cherokee</i>	96	251	85	74	506
<i>Cimarron</i>	0	0	0	0	0
<i>Cleveland</i>	154	228	107	204	693
<i>Coal</i>	443	557	377	49	1426
<i>Comanche</i>	0	500	250	0	750
<i>Cotton</i>	1000	0	0	0	1000
<i>Craig</i>	316	276	92	66	750
<i>Creek</i>	133	276	52	31	493
<i>Custer</i>	395	539	375	105	1414
<i>Delaware</i>	300	300	157	100	857
<i>Dewey</i>	729	1021	500	125	2375
<i>Ellis</i>	57	170	0	0	226
<i>Garfield</i>	144	505	371	72	1093
<i>Garvin</i>	407	814	128	128	1477
<i>Grady</i>	200	2300	0	0	2500
<i>Grant</i>	535	587	352	65	1539
<i>Greer</i>	250	469	31	94	844
<i>Harmon</i>	225	257	112	59	652
<i>Haskell</i>	103	147	78	138	466
<i>Hughes</i>	1143	429	286	0	1857
<i>Jackson</i>	0	0	0	0	0
<i>Jefferson</i>	0	0	0	0	0
<i>Johnston</i>	75	175	63	63	375
<i>Kay</i>	1333	867	800	67	3067
<i>Kingfisher</i>	522	565	217	0	1304
<i>Kiowa</i>	167	500	333	0	1000
<i>Latimer</i>	87	261	0	0	348
<i>LeFlore</i>	97	201	90	52	440
<i>Lincoln</i>	153	261	142	0	557
<i>Logan</i>	188	210	114	6	517
<i>Love</i>	111	519	56	0	685
<i>Major</i>	276	241	34	0	552
<i>Marshall</i>	167	0	167	1000	1333
<i>Mayes</i>	214	292	123	45	675
<i>McClain</i>	222	556	0	0	778

**Table 4** Continued.

	<b>Bucks</b>	<b>Does</b>	<b>Fawns</b>	<b>Unknown</b>	<b>Total Deer</b>
<b>County</b>	<b>Observations per 1,000 hours</b>				
<i>McCurtain</i>	109	374	12	16	510
<i>McIntosh</i>	333	667	167	0	1167
<i>Murray</i>	143	0	0	0	143
<i>Muskogee</i>	484	1226	194	161	2065
<i>Noble</i>	654	769	615	0	2038
<i>Nowata</i>	225	1138	739	29	2130
<i>Okfuskee</i>	239	193	170	102	705
<i>Oklahoma</i>	109	109	87	43	348
<i>Okmulgee</i>	192	432	168	168	960
<i>Osage</i>	178	297	66	38	580
<i>Ottawa</i>	110	210	10	40	370
<i>Pawnee</i>	265	223	155	25	668
<i>Payne</i>	148	257	120	38	563
<i>Pittsburg</i>	203	347	144	104	797
<i>Pontotoc</i>	65	97	71	71	303
<i>Pottawatomie</i>	176	284	101	47	608
<i>Pushmataha</i>	42	21	42	0	104
<i>Roger Mills</i>	196	413	457	0	1065
<i>Rogers</i>	265	735	521	0	1521
<i>Seminole</i>	250	325	225	0	800
<i>Sequoyah</i>	91	121	0	0	212
<i>Stephens</i>	214	405	122	130	870
<i>Texas</i>	778	0	0	0	778
<i>Tulsa</i>	63	172	78	16	328
<i>Wagoner</i>	49	284	222	25	580
<i>Washington</i>	117	260	52	52	481
<i>Washita</i>	200	0	0	0	200
<i>Woods</i>	358	520	104	0	983
<i>Woodward</i>	571	607	643	0	1821



## Furbearers

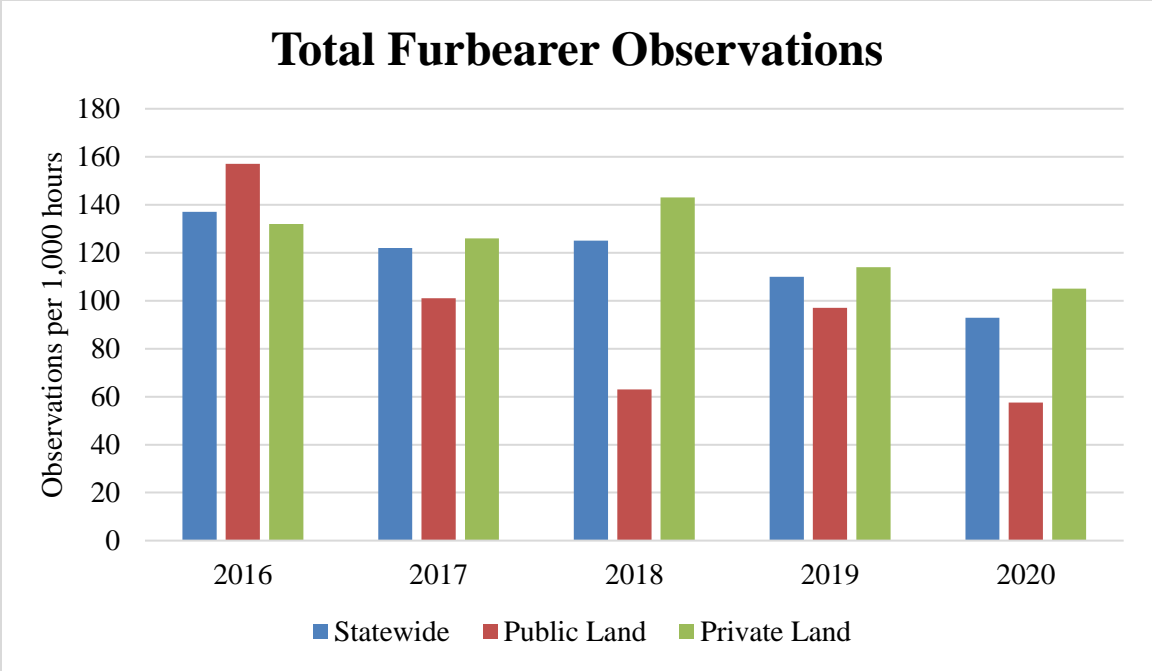
---

**Table 5.** Standardized furbearer observations from the 2020-season Bowhunter Observation Survey, statewide and by land type.

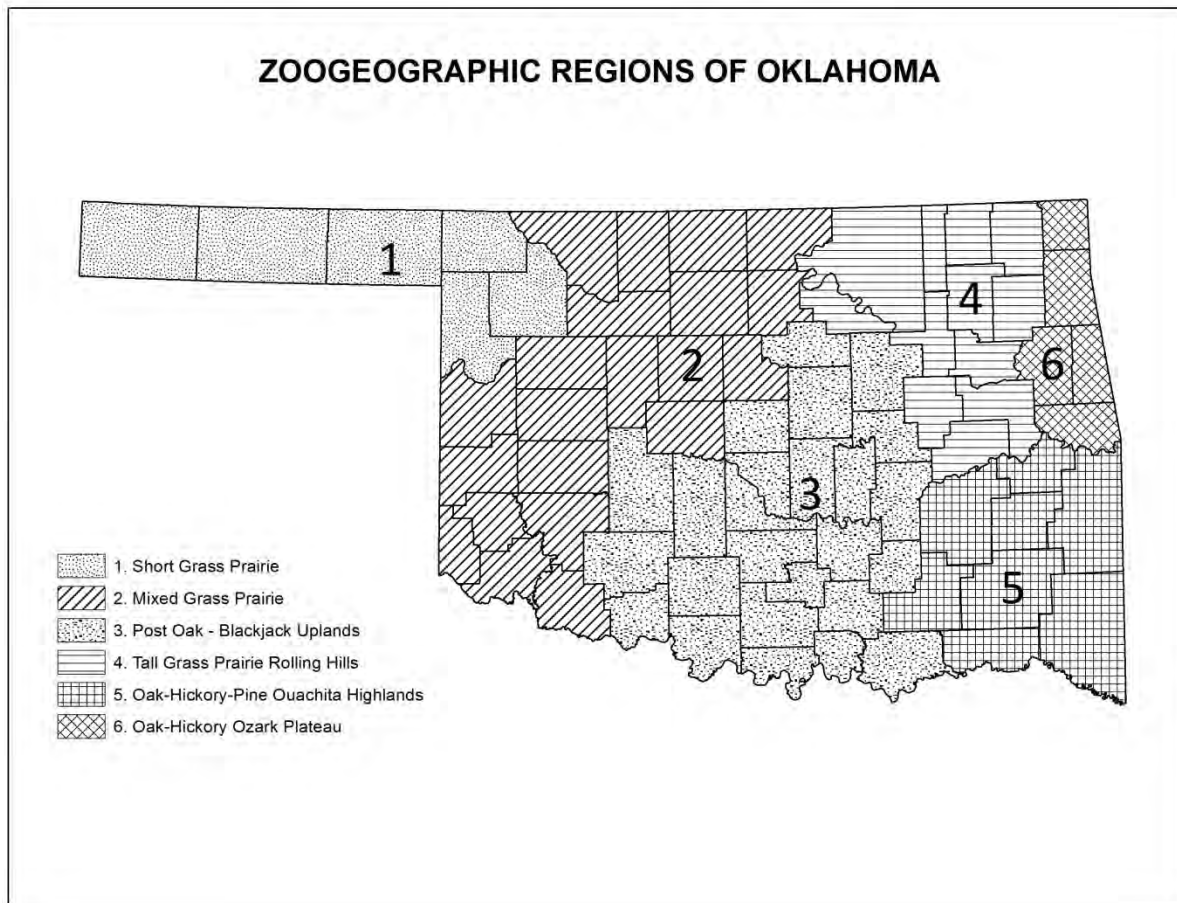
---

<b>Species</b>	<b>Statewide</b>	<b>Public Land</b>	<b>Private Land</b>
	<b>Observations per 1,000 Hours</b>		
<i>Total Furbearers</i>	92.9	57.5	105.0
<i>Red Fox</i>	2.1	4.6	1.2
<i>Opossum</i>	10.6	6.9	11.9
<i>Badger</i>	0.0	0.0	0.0
<i>River Otter</i>	0.1	0.6	0.0
<i>Striped Skunk</i>	7.5	1.2	9.7
<i>Bobcat</i>	8.1	2.9	9.9
<i>Raccoon</i>	35.5	15.5	42.3
<i>Gray Fox</i>	2.1	5.8	0.8
<i>Coyote</i>	26.9	20.1	29.3

---



**Figure 3.** Comparison of standardized furbearer observations from the 2016-2020 seasons Bowhunter Observation Survey, statewide and by land type.



**Table 6.** Standardized furbearer observations from the 2020-season Bowhunter Observation Survey, by zoogeographic regions.

Zoogeographic Region*	Red Fox	Opossum	Badger	River Otter	Striped Skunk	Bobcat	Raccoon	Gray Fox	Coyote	Total Obs.
	Observations per 1,000 Hours									
1	0.00	0.00	0.00	0.00	9.90	0.00	19.80	0.00	128.71	158.42
2	0.00	19.13	0.00	0.00	10.93	12.30	67.62	0.00	46.45	156.42
3	2.92	6.26	0.00	0.42	7.09	6.67	25.85	0.83	14.18	64.22
4	4.37	10.20	0.00	0.00	7.29	8.02	40.09	5.10	31.34	106.41
5	0.00	14.96	0.00	0.00	6.90	5.75	23.01	0.00	16.11	66.74
6	1.75	3.49	0.00	0.00	1.75	8.73	5.24	8.73	19.20	48.87

\*Zoogeographic Regions: 1 - Short Grass Prairie; 2 - Mixed Grass Prairie; 3 - Post Oak - Blackjack Uplands; 4 - Tall Grass Prairie Rolling Hills; 5 - Oak-Hickory-Pine Ouachita Highlands; 6 - Oak-Hickory Ozark Plateau

**Table 7.** Standardized furbearer observations from the 2020-season Bowhunter Observation Survey, by county.

<b>County</b>	<b>Red Fox</b>	<b>Opossum</b>	<b>Badger</b>	<b>River Otter</b>	<b>Striped Skunk</b>	<b>Bobcat</b>	<b>Raccoon</b>	<b>Gray Fox</b>	<b>Coyote</b>	<b>Total Obs.</b>
	<b>Observations per 1,000 Hours</b>									
<i>Adair</i>	0.00	10.10	0.00	0.00	0.00	20.20	0.00	20.20	50.51	101.01
<i>Alfalfa</i>	0.00	0.00	0.00	0.00	0.00	0.00	0.00	0.00	27.78	27.78
<i>Atoka</i>	0.00	17.09	0.00	0.00	42.74	0.00	34.19	0.00	17.09	111.11
<i>Beaver</i>	0.00	0.00	0.00	0.00	0.00	0.00	0.00	0.00	0.00	0.00
<i>Beckham</i>	0.00	0.00	0.00	0.00	129.03	0.00	0.00	0.00	0.00	129.03
<i>Blaine</i>	0.00	9.35	0.00	0.00	0.00	0.00	9.35	0.00	9.35	28.04
<i>Bryan</i>	0.00	2.91	0.00	0.00	0.00	2.91	20.35	2.91	5.81	34.88
<i>Caddo</i>	0.00	12.50	0.00	0.00	0.00	0.00	25.00	0.00	37.50	75.00
<i>Canadian</i>	0.00	0.00	0.00	0.00	0.00	264.71	29.41	0.00	0.00	294.12
<i>Carter</i>	0.00	30.30	0.00	0.00	0.00	0.00	212.12	0.00	30.30	272.73
<i>Cherokee</i>	0.00	0.00	0.00	0.00	3.69	11.07	7.38	0.00	18.45	40.59
<i>Choctaw</i>	0.00	0.00	0.00	0.00	0.00	0.00	0.00	0.00	0.00	0.00
<i>Cimarron</i>	0.00	0.00	0.00	0.00	0.00	0.00	0.00	0.00	50.00	50.00
<i>Cleveland</i>	0.00	4.94	0.00	0.00	2.47	9.88	7.41	0.00	4.94	29.63
<i>Coal</i>	0.00	49.18	0.00	0.00	196.72	16.39	49.18	0.00	16.39	327.87
<i>Comanche</i>	0.00	0.00	0.00	0.00	0.00	0.00	0.00	0.00	0.00	0.00
<i>Cotton</i>	0.00	0.00	0.00	0.00	0.00	0.00	0.00	0.00	0.00	0.00
<i>Craig</i>	0.00	39.47	0.00	0.00	13.16	26.32	65.79	0.00	92.11	236.84
<i>Creek</i>	0.00	7.58	0.00	0.00	0.00	7.58	7.58	3.79	18.94	45.45
<i>Custer</i>	0.00	0.00	0.00	0.00	26.32	0.00	111.84	0.00	6.58	144.74
<i>Delaware</i>	14.29	14.29	0.00	0.00	0.00	0.00	0.00	42.86	0.00	71.43
<i>Dewey</i>	0.00	0.00	0.00	0.00	0.00	0.00	395.83	0.00	145.83	541.67
<i>Ellis</i>	0.00	0.00	0.00	0.00	0.00	0.00	0.00	0.00	0.00	0.00
<i>Garfield</i>	0.00	85.11	0.00	0.00	10.64	0.00	127.66	0.00	63.83	287.23
<i>Garvin</i>	0.00	0.00	0.00	0.00	0.00	0.00	0.00	0.00	0.00	0.00
<i>Grady</i>	0.00	0.00	0.00	0.00	0.00	0.00	0.00	0.00	0.00	0.00
<i>Grant</i>	0.00	39.13	0.00	0.00	26.09	26.09	60.87	0.00	21.74	173.91
<i>Greer</i>	0.00	0.00	0.00	0.00	0.00	0.00	83.33	0.00	0.00	83.33
<i>Harmon</i>	0.00	0.00	0.00	0.00	0.00	5.81	0.00	0.00	63.95	69.77
<i>Harper</i>	0.00	0.00	0.00	0.00	0.00	0.00	0.00	0.00	0.00	0.00
<i>Haskell</i>	0.00	17.86	0.00	0.00	8.93	17.86	8.93	0.00	26.79	80.36
<i>Hughes</i>	0.00	0.00	0.00	0.00	0.00	0.00	0.00	0.00	0.00	0.00
<i>Jackson</i>	0.00	0.00	0.00	0.00	0.00	0.00	0.00	0.00	0.00	0.00
<i>Jefferson</i>	0.00	0.00	0.00	0.00	0.00	0.00	0.00	0.00	0.00	0.00
<i>Johnston</i>	0.00	13.79	0.00	6.90	6.90	6.90	55.17	0.00	13.79	103.45
<i>Kay</i>	0.00	133.33	0.00	0.00	0.00	66.67	400.00	0.00	200.00	800.00
<i>Kingfisher</i>	0.00	0.00	0.00	0.00	0.00	0.00	43.48	0.00	130.43	173.91
<i>Kiowa</i>	0.00	0.00	0.00	0.00	0.00	0.00	0.00	0.00	0.00	0.00
<i>Latimer</i>	0.00	0.00	0.00	0.00	0.00	0.00	0.00	0.00	43.48	43.48
<i>LeFlore</i>	0.00	7.46	0.00	0.00	0.00	0.00	29.85	0.00	14.93	52.24
<i>Lincoln</i>	0.00	12.05	0.00	0.00	0.00	0.00	30.12	0.00	48.19	90.36

**Table 7** Continued.

<b>County</b>	<b>Red Fox</b>	<b>Opossum</b>	<b>Badger</b>	<b>River Otter</b>	<b>Striped Skunk</b>	<b>Bobcat</b>	<b>Raccoon</b>	<b>Gray Fox</b>	<b>Coyote</b>	<b>Total Obs.</b>
<b>Observations per 1,000 Hours</b>										
<i>Logan</i>	0.00	12.20	0.00	0.00	0.00	0.00	12.20	0.00	18.29	42.68
<i>Love</i>	0.00	0.00	0.00	0.00	0.00	0.00	0.00	0.00	74.07	74.07
<i>Major</i>	0.00	0.00	0.00	0.00	0.00	0.00	0.00	0.00	0.00	0.00
<i>Marshall</i>	0.00	0.00	0.00	0.00	0.00	0.00	333.33	0.00	0.00	333.33
<i>Mayes</i>	0.00	20.13	0.00	0.00	13.42	0.00	20.13	6.71	26.85	87.25
<i>McClain</i>	0.00	0.00	0.00	0.00	0.00	0.00	111.11	0.00	55.56	166.67
<i>McCurtain</i>	0.00	0.00	0.00	0.00	0.00	0.00	23.35	0.00	0.00	23.35
<i>McIntosh</i>	0.00	0.00	0.00	0.00	0.00	250.00	0.00	0.00	0.00	250.00
<i>Murray</i>	0.00	0.00	0.00	0.00	0.00	0.00	0.00	0.00	0.00	0.00
<i>Muskogee</i>	0.00	0.00	0.00	0.00	0.00	0.00	0.00	0.00	0.00	0.00
<i>Noble</i>	0.00	38.46	0.00	0.00	0.00	38.46	384.62	0.00	0.00	461.54
<i>Nowata</i>	0.00	16.00	0.00	0.00	0.00	0.00	120.00	0.00	8.00	144.00
<i>Okfuskee</i>	0.00	0.00	0.00	0.00	0.00	11.90	0.00	0.00	11.90	23.81
<i>Oklahoma</i>	43.48	0.00	0.00	0.00	0.00	0.00	21.74	0.00	0.00	65.22
<i>Okmulgee</i>	0.00	25.64	0.00	0.00	0.00	17.09	76.92	0.00	59.83	179.49
<i>Osage</i>	0.00	0.00	0.00	0.00	0.00	6.99	45.45	0.00	41.96	94.41
<i>Ottawa</i>	0.00	0.00	0.00	0.00	0.00	0.00	0.00	0.00	10.00	10.00
<i>Pawnee</i>	0.00	7.38	0.00	0.00	11.07	11.07	0.00	0.00	33.21	62.73
<i>Payne</i>	0.00	0.00	0.00	0.00	14.39	28.78	14.39	0.00	14.39	71.94
<i>Pittsburg</i>	0.00	44.94	0.00	0.00	0.00	16.85	28.09	0.00	33.71	123.60
<i>Pontotoc</i>	0.00	0.00	0.00	0.00	7.19	7.19	64.75	0.00	0.00	79.14
<i>Pottawatomie</i>	39.37	0.00	0.00	0.00	0.00	7.87	0.00	0.00	7.87	55.12
<i>Pushmataha</i>	0.00	0.00	0.00	0.00	0.00	0.00	0.00	0.00	0.00	0.00
<i>Roger Mills</i>	0.00	0.00	0.00	0.00	0.00	0.00	21.74	0.00	108.70	130.43
<i>Rogers</i>	0.00	0.00	0.00	0.00	25.64	0.00	8.55	0.00	17.09	51.28
<i>Seminole</i>	0.00	0.00	0.00	0.00	0.00	0.00	0.00	0.00	0.00	0.00
<i>Sequoyah</i>	0.00	0.00	0.00	0.00	0.00	0.00	30.30	0.00	0.00	30.30
<i>Stephens</i>	0.00	0.00	0.00	0.00	0.00	0.00	18.87	0.00	0.00	18.87
<i>Texas</i>	0.00	0.00	0.00	0.00	0.00	0.00	0.00	0.00	1222.22	1222.22
<i>Tillman</i>	0.00	0.00	0.00	0.00	0.00	0.00	0.00	0.00	0.00	0.00
<i>Tulsa</i>	0.00	0.00	0.00	0.00	16.39	0.00	65.57	0.00	16.39	98.36
<i>Wagoner</i>	0.00	14.08	0.00	0.00	0.00	0.00	70.42	0.00	0.00	84.51
<i>Washington</i>	77.92	0.00	0.00	0.00	0.00	12.99	0.00	77.92	0.00	168.83
<i>Washita</i>	0.00	100.00	0.00	0.00	0.00	0.00	200.00	0.00	0.00	300.00
<i>Woods</i>	0.00	23.12	0.00	0.00	5.78	0.00	63.58	0.00	80.92	173.41