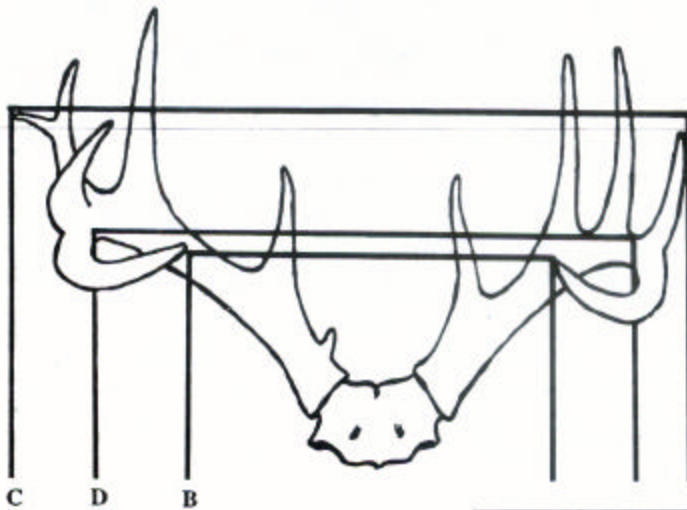
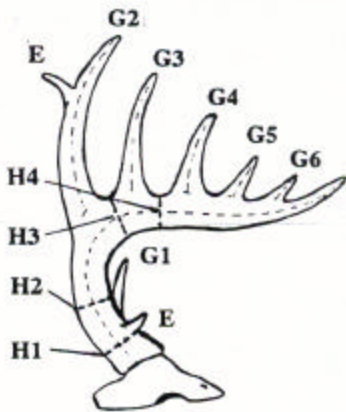


OKLAHOMA DEPARTMENT OF WILDLIFE CONSERVATION CY CURTIS AWARD PROGRAM

TYPICAL WHITE-TAILED DEER
MINIMUM SCORE - 135



Detail of Point
Measurement

Abnormal Points	
Right Antler	Left Antler

Enter Total at E.

See Other Side For Instructions				Column 1	Column 2	Column 3	Column 4
A. Number of Points on Each Antler	R.	L.	Spread Credit	Right Antler	Left Antler	Difference	
B. Tip to Tip Spread		C. Greatest Spread					
D. Inside Spread of Main Beam		Credit may equal but not exceed length of longer antler					
E. Total Length of Abnormal Points							
F. Length of Main Beams							
G-1. Length of 1st Point, if Present							
G-2. Length of 2nd Point							
G-3. Length of 3rd Point							
G-4. Length of 4th point, if Present							
G-5. Length of 5th Point, if Present							
G-6. Length of 6th Point, if Present							
G-7. Length of 7th Point, if Present							
H-1. Smallest Circumference Between Burr and 1st Point							
H-2. Smallest Circumference Between 1st and 2nd Points							
H-3. Smallest Circumference Between 2nd and 3rd Points							
H-4. Smallest Circumference Between 3rd and 4th Points							
TOTALS							

Column 1		County of Kill:	Nearest Town:
Column 2		Date Killed:	By Whom Killed:
Column 3		Mailing Address:	
Subtotal		Present Owner (if different than Above)	
Subtract Column 4		Type of Weapon:	Check Station:
Final Score		Remarks:	